



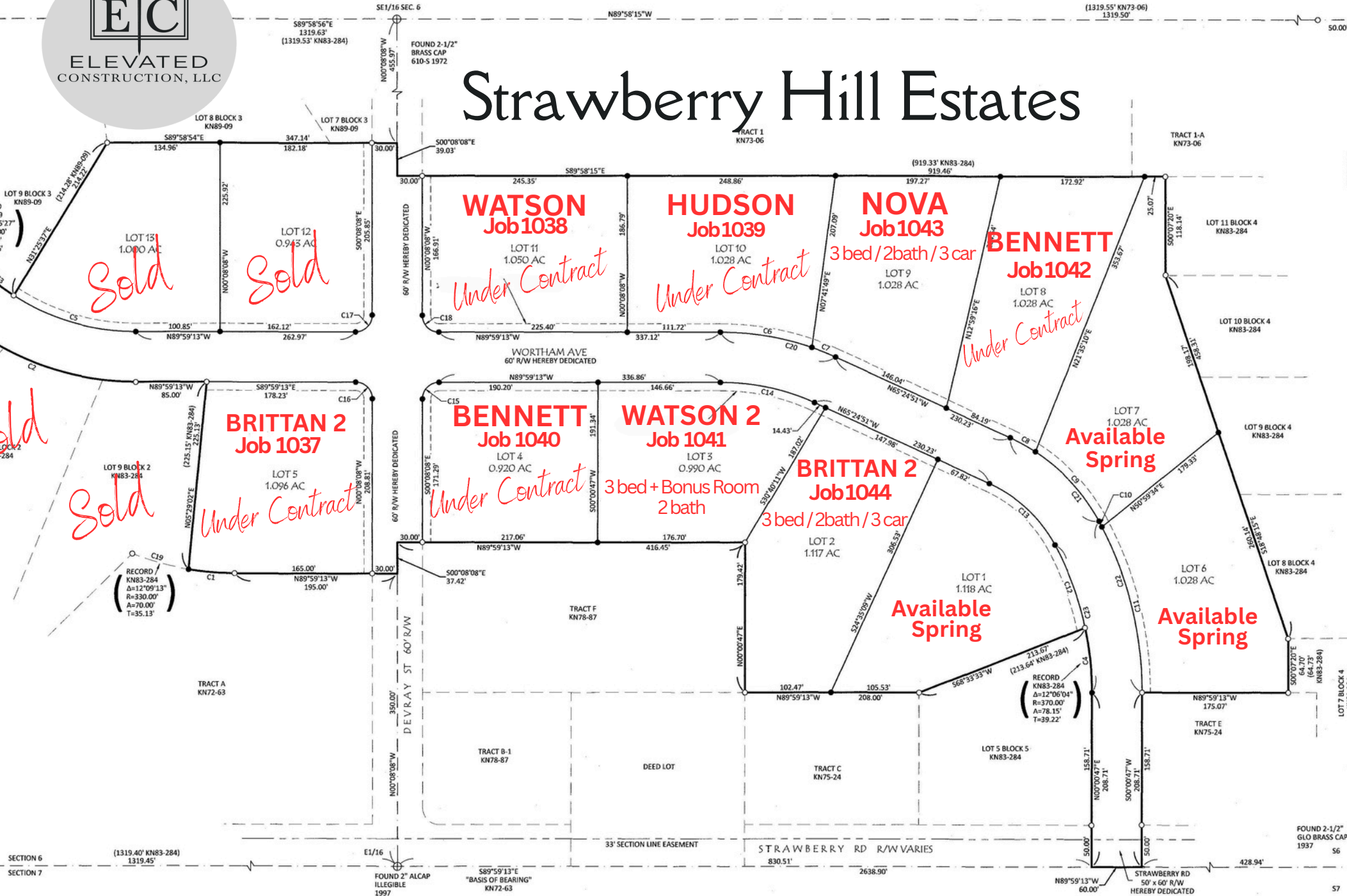
ELEVATED
CONSTRUCTION, LLC

STATE OF ALASKA
NOTARY PUBLIC
Benjamin Benson
My Commission Expires Jun 29, 2027

CODY R. McLANE C.E. 11510 AK DATE

KN72-03)
HORNADAY PROPERTY SURVEY (KN73-06)
DAVIDSON HOMESTEAD - TRACTS B-1 & F (KN75-24)
DAVIDSON HOMESTEAD - TRACTS B-1 & F (KN78-87)
STRAWBERRY HILL ESTATES (KN83-284)
STRAWBERRY HILL ESTATES JOHNSEE ADDITION (KN89-09)

Strawberry Hill Estates



PLAT APPROVAL
THIS PLAT WAS APPROVED BY THE KENAI PENINSULA
BOROUGH PLANNING COMMISSION AT THE MEETING
OF FEBRUARY 26, 2024.
[Signature]
AUTHORIZED OFFICIAL