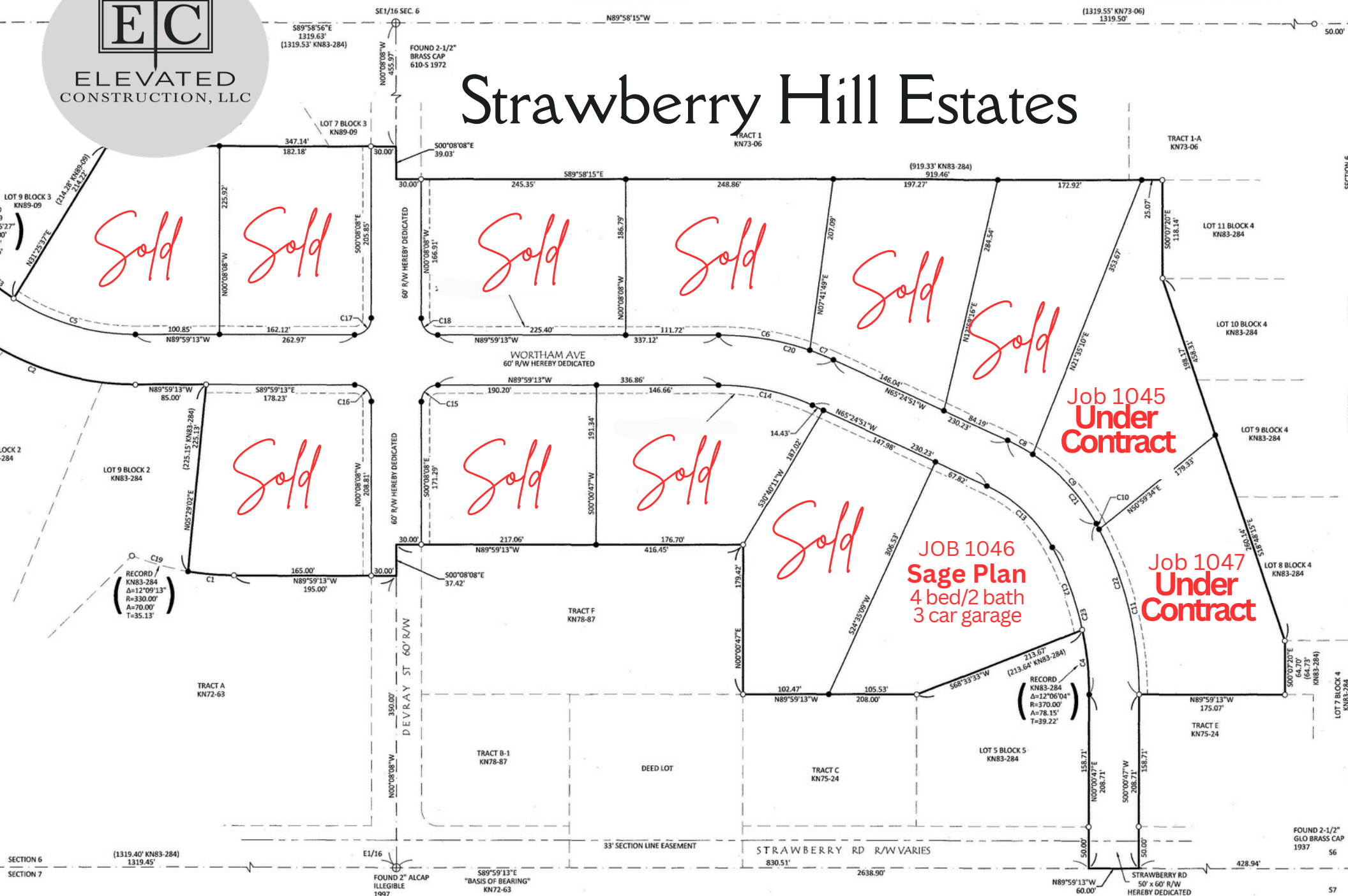




Strawberry Hill Estates



Sold Sold

Sold

Sold

Sold

Sold

Sold

Sold

Sold

Sold

Job 1045
Under Contract

JOB 1046
Sage Plan
4 bed/2 bath
3 car garage

Job 1047
Under Contract

RECORD /
KN83-284
Δ=12°09'13"
R=330.00'
A=70.00'
T=35.13'

RECORD
KN83-284
Δ=12°06'04"
R=370.00'
A=78.15'
T=39.22'

PLAT APPROVAL

THIS PLAT WAS APPROVED BY THE KENAI PENINSULA BOROUGH PLANNING COMMISSION AT THE MEETING OF FEBRUARY 26, 2024.

[Signature]
AUTHORIZED OFFICIAL